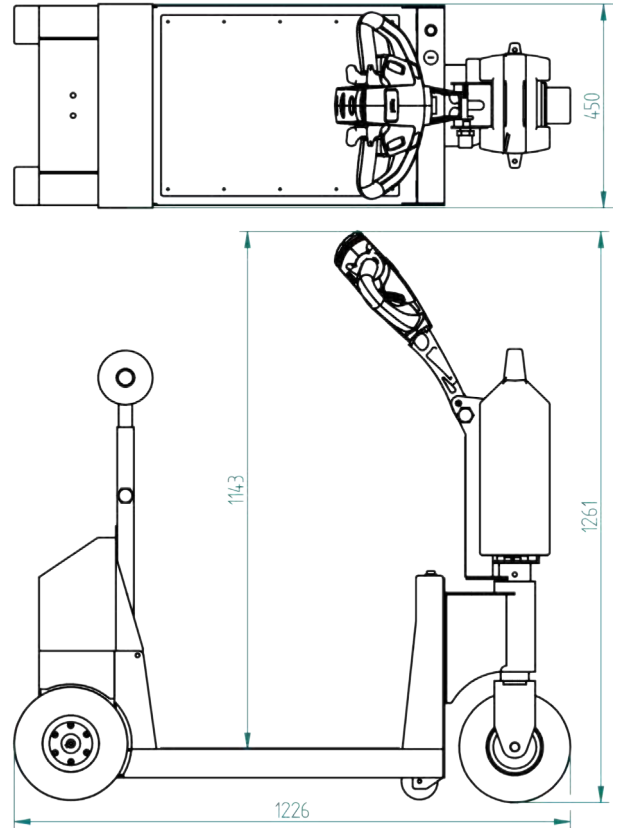




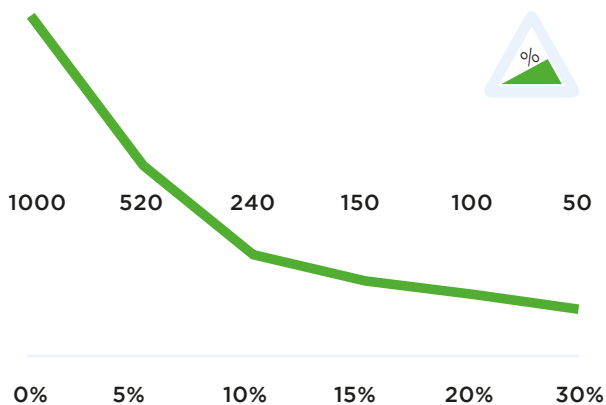
## Specifications T1000-PLATFORM

<b>Frame</b>	Steel, powder coated
<b>Drive</b>	24V DC, 420W, 140 rpm
<b>Weight</b>	70 kg
<b>Weight trailer</b>	1000 kg
<b>Battery</b>	Exchangable batterypack
<b>Speed</b>	Max. 6,6 km/h
<b>Drive wheels</b>	Full rubber ø250x80 mm
<b>Width</b>	450mm
<b>Length</b>	1226mm
<b>Adze height</b>	750-1261mm
<b>Folded</b>	900mm
<b>Noise level</b>	63,8 dB
<b>To use from</b>	-40 °C / 70 °C
<b>Protection class</b>	Machine IP44

## Dimensions T1000-PLATFORM



## Pulling power T1000-PLATFORM (in kg)



\*Measured with a trolley with 2 swivelwheels and 2 fixed castors. Wheel diameter: 160mm

## Standard T1000-PLATFORM



## Standard parts T1000-PLATFORM

**Battery charger Lithium 29,4V-10A**



Item number:  
OPT0013

**Battery Lithium-Li-FePO4 25,6V-36Ah GREEN**



Item number:  
OPT0106

**Full-rubber drive wheel, black**



Item number:  
M0248

**Adjustable tillerhead**



Item number:  
Standardpart 1

**2 programmable speeds**



Item number:  
Standardpart 3

## Standard parts T1000-PLATFORM

**Engine 420W  
140RPM BRAKE  
6911439X**



Item number:  
M1034

**LED battery indicator  
LBF318-24V**



Item number:  
M0123

## Options T1000-PLATFORM



**Motor 530W 170RP-M+REM instead 420W**

Article number:  
OPT0025



**Battery Lithium-Li-FePO4 25,6V-36Ah GREEN**

Article number:  
OPT0106



**SURCH drive wheel foamed BLACK**

Article number:  
OPT0158



**SURCHARGE wheel airtire foamed 2b BLACK**

Article number:  
OPT0160



**SURCH driving wheel full rubber nm GREY**

Article number:  
OPT0161



**SURCHARGE wheel full rubber non-marking**

Article number:  
OPT0162



**SURCHARGE driving wheel non-marking YELL**

Article number:  
OPT0163



**SURCHARGE wheel non-marking YELLOW**

Article number:  
OPT0164



**Horn 90dB**

Article number:  
OPT0045



**Horn**

Article number:  
OPT0055



**Horn 103 dB**

Article number:  
OPT0059



**Emergency stop complete**

Article number:  
OPT0063

## Options T1000-PLATFORM



**Strobelight cast iron tiller head**

Article number:  
OPT0076



**Safety fender for steering wheel**

*Wheel Shield*

Article number:  
OPT0079



**LED lighting white incl switch**

Article number:  
OPT0105



**Strobelights in front of Scooter**

Article number:  
OPT0118



**Strobelight**

Article number:  
OPT0120



**Mirror with telesc. arm (left)**

Article number:  
OPT0132



**Mirror with telesc. arm right-hand**

Article number:  
OPT0133



**Blue Safety spot**

Article number:  
OPT0251



**Acoustic signal while driving**

Article number:  
OPT0253



**Acoustic signal driving backwards**

Article number:  
OPT0254



**Light Blue Spot Safety light**

Article number:  
M0961



**Tool/coupling box**

Article number:  
OPT0014

## Options T1000-PLATFORM



**On/off switch machine**

Article number:  
OPT0016



**Remote**

*8-channel*

Article number:  
OPT0024-3



**Radio remote control**

*6 channel*

Article number:  
OPT0026-3



**hour counter complete**

Article number:  
OPT0056



**Antistatic strip**

Article number:  
OPT0058



**Code lock**

Article number:  
OPT0068



**Winch T1000-PLATFORM front**

Article number:  
OPT0090



**Winch T1000-PLATFORM Backside**

Article number:  
OPT0092-1



**LED lighting red incl switch**

Article number:  
OPT0093



**Document holder**

Article number:  
OPT0127



**Preparation electric hook**

Article number:  
OPT0143



**Ignition key unequal key**

Article number:  
OPT0145

## Options T1000-PLATFORM



**Ignition key equal key**

Article number:  
OPT0146



**Ignition key under larger tiller head**

*Unequal key. Only with OPT0171*

Article number:  
OPT0147



**Ignition key under larger tiller head**

*Equal key. Only with OPT0171*

Article number:  
OPT0148



**Customized programming**

Article number:  
OPT0170



**Larger Tiller-Head**

*With 6 switch positions*

Article number:  
OPT0171



**Programmer for Ital-sea**

Article number:  
D0003



**Charger unit for 1 AGM battery**

Article number:  
OPT0015



**Charging Station for 1 Lithium battery**

Article number:  
OPT0023



**Charging station for 5 Lithium batteries**

Article number:  
OPT0029



**Charging station for 5 batteries**

Article number:  
OPT0039



**U-Frame for waste container 1000/1100L**

Article number:  
OPT0088



**Charging Station for 6 AGM Batteries**

Article number:  
OPT0115

## Options T1000-PLATFORM



**Adaptor fo 2 wheel bin's**

Article number:  
OPT0151



**Locking module charging Station 6 units**

*Locking module charging Station with 6 units*

Article number:  
OPT0152



**Surcharge single charging station**

Article number:  
OPT0261



**Folding Hook, diameter 16**

Article number:  
H0128-D16



**Folding Hook, diameter 20**

Article number:  
H0128-D20



**Folding Hook, diameter 25**

Article number:  
H0128-D25



**Folding Hook, diameter 32**

Article number:  
H0128-D32



**Folding Hook, diameter 35**

Article number:  
H0128-D35



**Basic hook 90°**

Article number:  
H7030



**Articulated "quick-change" hook**

Article number:  
H7090



**Hook Straightener**

Article number:  
OPT0012



**Electric lifting module for Hooks**

Article number:  
OPT0050

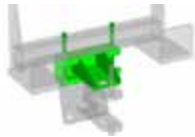


## Options T1000-PLATFORM



**Folding hook for flower trolleys**

Article number:  
OPT0099



**Support for exchangeable hook**

Article number:  
OPT0122



**Electrical locking module for hook**

Article number:  
OPT0129



**Automatic trailer coupling**

Article number:  
OPT0200



**Basemodule, spring, bolt en counterplate**

Article number:  
OPT0203



**Jacket Movexx size M**

Article number:  
OPT0197



**Jacket Movexx size L**

Article number:  
OPT0198



**Jacket Movexx size XL**

Article number:  
OPT0199



**Movexx Parking label**

Article number:  
OPT0245



## **Movexx International B.V.**

Wiltonstraat 61-63

3905 KW Veenendaal

Tel +31 (0)318 51.99.00

Fax +31 (0)318 50.80.20

E-mail [info@movexx.nl](mailto:info@movexx.nl)